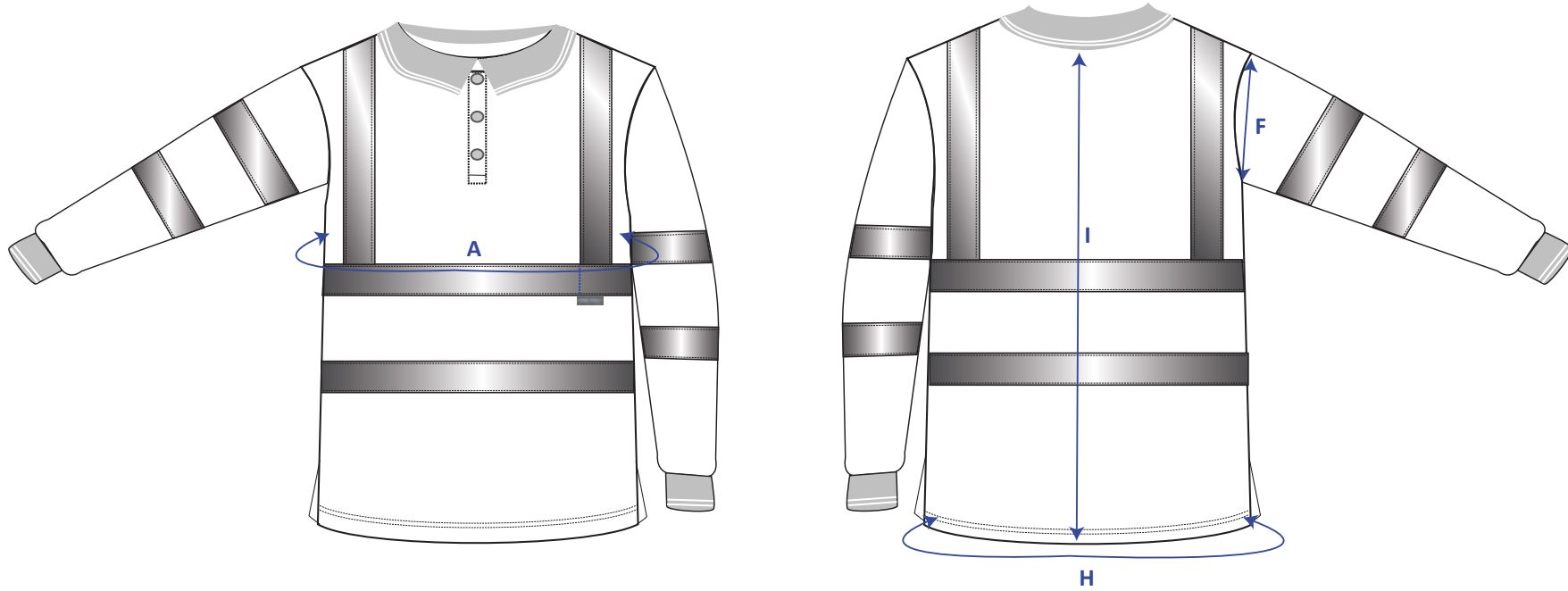


STYLE NO: S277

DESCRIPTION: Hi-Vis Long Sleeved Polo Shirt

FABRIC: 100% Polyester Bird Eye Knit, 175g/m2

COLOUR: Yellow/Orange



Area	Measurements in fully relaxed fabric (cm)	XS	S	M	L	XL	XXL	XXXL	4XL	5XL	6XL	7XL	Tol (+)
A	Chest	100	106	114	122	130	138	146	154	162	168	176	1
F	Armhole	25	26	27	28	29	30	31	32	33	34	35	0.5
H	Hem circumference	100	106	114	122	130	138	146	154	162	168	176	0.5
I	Centre Back Length	76	76	76	76	76	76	78	78	80	80	80	1